

The Archaeological Excavations of the Hill of Armavir  
October 2006  
Inesa Karapetian

As stated in the project proposal, the Armavir excavations were carried out on the summit of the hill of Armavir and on its northern slope (fig. 1). The extent of the work carried out on the south side of the summit of the hill consisted of an approximately 65 square meter area, or 130 cubic meters, while that on the northern slope consisted of 191.40 square meters, resulting in a total of 370 cubic meters of excavation. On the western part of the summit of the hill the excavations exposed 120 square meters, with a general extent of 60 cubic meters (fig. 2).

On the summit of the hill, our work focused on the excavation of the southern wall of the central construction of the hill (fig. 03). The western (fig. 04) and northern (fig. 05) walls of this building were excavated earlier, in the summer. During the October excavations, the southern wall was cleared across its entire length (14.90 m), as was the south eastern corner, (which was wonderfully preserved), and a part (5 meters) of the eastern wall, on which rested a wall of the medieval construction.

In the course of the excavations, in the upper levels we discovered traces of a medieval construction with domestic hearths (“tonirs”), pits, large storage vessels, and associated archaeological materials.

The central construction was built in accordance with the precise canon of Urartian temple architecture. In its planned resolution, this square construction (14.90m x 14.90m) is built with great knowledge and skill in the use of the rocky relief of the summit of the hill, which is very characteristic for Urartian architecture (Cavus tepe, Altintepe, Van, etc).

Through the excavations of this season, we uncovered a counterforce feature in the south eastern corner of the construction, which further confirmed the temple character of the construction and made certain the subsequent discovery of an entrance into the temple on the eastern wall.

On the northern slope of the hill we completed the excavations of a sanctuary (with the dimensions of 17.10 m x 10.80 m) (fig. 6). The architectural appearance of the sanctuary arises from the organic use and working of the rocky outcrops of the hill in connection with the cultic performance. The interior area of the sanctuary is enclosed on the eastern side by the worked cliff, the southern side by a faced stone cliff, and the western side by a constructed stone wall. The rocky outcrops dominate the interior space, one of which (dimensions 3.80 m x 4.10 m) is an altar. The second (dimensions 3.30 m x 3.30 m) was transformed into a three-stepped pedestal (*parakon*) for a statue of a god. A basalt idol was found at the base of that pedestal. Inside, aside from the cultic character of the bones of sacrificial animals, there was found a movable stone altar. During the excavations of the sanctuary, in the upper levels traces of rebuilding were found, and the artifacts demonstrate that sanctuary functioned in the post-Urartu period.

We would like to express our deep appreciation to the Board of Directors of Project Discovery! for making possible these excavations, as a result of which yet one more Urartian temple

building has been brought to light. We are extremely excited by the results of the work made possible by your organization and are eager to continue our investigations of this important site in the future.

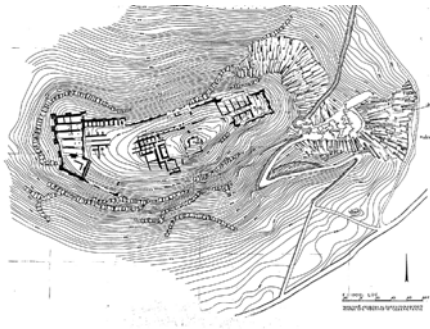


Figure 1

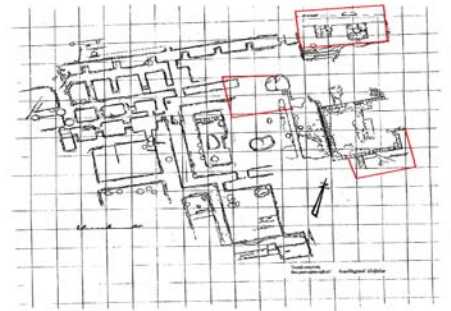


Figure 2



Figure 3



Figure 4



Figure 5



Figure 6